

WATER PUMP

WX10

PARTS CATALOGUE

3

FOREWORD INDEX

1

ENGINE GROUP

2

FRAME GROUP

3

PART NUMBER INDEX

4

PART NAME INDEX

5

Instruction for use of parts catalogue

- **This parts catalogue was prepared based on the latest information available as of April 20, 2004.**
 - See the parts catalogue news for any revision that is made after April 20, 2004.
- **Always specify the part number when ordering a part.**
 - Check the model, type, serial numbers, color, maker, and the size as needed before ordering a part.
 - Note that the illustrations (part drawings) can differ from the actual parts in shape. They are given just to help you to refer to the parts.
- **When modifications or additions to this parts catalogue are made, a revised edition will be issued at an appropriate time, with successively progressing revision numbers on the cover. We recommend obtaining such revisions in order to keep your parts catalogue up-to-date at all times. To check whether a parts catalogue revision has been issued, please contact your Honda distributor.**

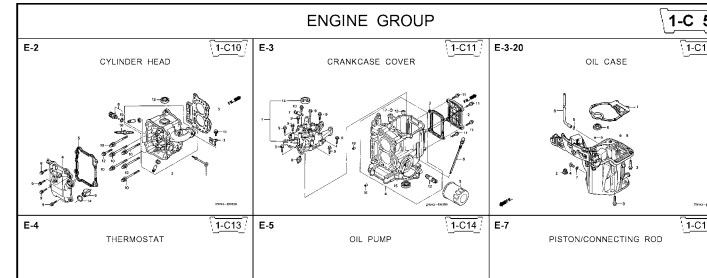
Initial version issue date April 20, 2004
Honda Motor Co., Ltd.

CONTENTS

	Page	Address No.	
● How to refer to the part information	2	B 2	1
● Part catalogue structure	3	B 3	
● When the parts were revised	4	B 4	
● Abbreviations used in the parts catalogue.....	4	B 4	
● How to check the part block and serial numbers.....	5	B 5	
● Models, parts catalogue codes and applicable serial numbers	6	B 6	
● Features of each type.....	6	B 6	
● Fuel hose, general purpose hoses and vinyl hose.....	7	B 7	
● Illustrated index	8	B 8	
● ENGINE GROUP.....	11	C 1	2
● FRAME GROUP.....	28	E 1	3
● PART NO. INDEX.....	33	F 1	4
● PART NAME INDEX.....	35	G 1	5

How to refer to the part information

A Reference with "Illustrated index"



B Reference with "Part number index"

PART NO. INDEX					
Part Number	Address	Page	Ref.	Part Number	Address Page
06000				15212-ZW9-000	1-C14 3C
				15220-ZW9-003	1-C14 3C
06316-ZW9-000	1-G9	88	1	15332-ZW9-000	1-E8 55
				15332-ZW9-A30	1-E11 58
11000				15400-PFB-004	1-C11 27
				15422-ZW9-000	1-C14 3C
11300-ZW9-405	1-C11	27	1	15473-881-000	1-C14 3C
11300-ZW9-406	1-C11	27	1	15474-ZW9-000	1-C14 3C
11340-ZW9-000	1-C11	27	2	15611-921-000	1-C10 2E
11342-ZW9-000	1-C11	27	3	15655-ZW9-000	1-C11 27
11381-ZW9-003	1-C12	28	1		
				16000	
12000				16010-ZV4-005	1-D4 3E
12000-ZW9-405ZA	1-C11	27	4	16011-ZV4-005	1-D4 3E
12155-ZV4-A00	1-C13	29	1	16013-ZW9-003	1-D4 3E
12166-ZW9-000	1-C10	26	1	16016-ZW9-003	1-D4 3E
12209-GB4-681	1-C16	32	1	16016-ZW9-721	1-D4 3E
12210-ZW9-405ZA	1-C10	26	2	16023-ZW9-003	1-D4 3E
12216-ZE2-300	1-E8	55	1	16024-ZV4-650	1-D4 3E
	1-E11	58	1	16028-ZV4-650	1-D4 3E

C Reference with "Part name index"

PART NAME INDEX					
Part name	Address	Page	Ref.		
[A]					
ABSORBER , FUEL	1-E15	62	5	BOLT ,	
ARMATURE COMP.	1-D11	43	7	BOLT ,	
ARM COMP. , LINK JOINT	1-G6	85	18	BOLT ,	
ARM COMP. , SHIFT LINK	1-G6	85	14	BOLT ,	
ARM COMP. , TILT	1-F15	79	20		
ARM , FUEL PUMP ROCKER	1-C16	32	4		
ARM , REVERSE LOCK	1-F15	79	18		
ARM , SHIFT LINK	1-F11	74	7		
ARM , STOPPER	1-D1	33	12	BOLT ,	
ARM , THROTTLE REMOTE	1-F11	74	6		
ARM , VALVE ROCKER	1-C16	32	3		
[B]					
BAG , TOOL , 160MM	1-G5	84	10		
BAND	1-G6	86	37		
BAND B1 , WIRE	1-F6	69	1		
BAND , CORD	1-F3	67	18	BOLT ,	
BAND , TUBE CLIP , 11MM	1-E15	63	20		
BAND , TUBE CLIP , 12.5MM	1-E15	63	19	BOLT ,	

Block No.

Address No. 1-C10

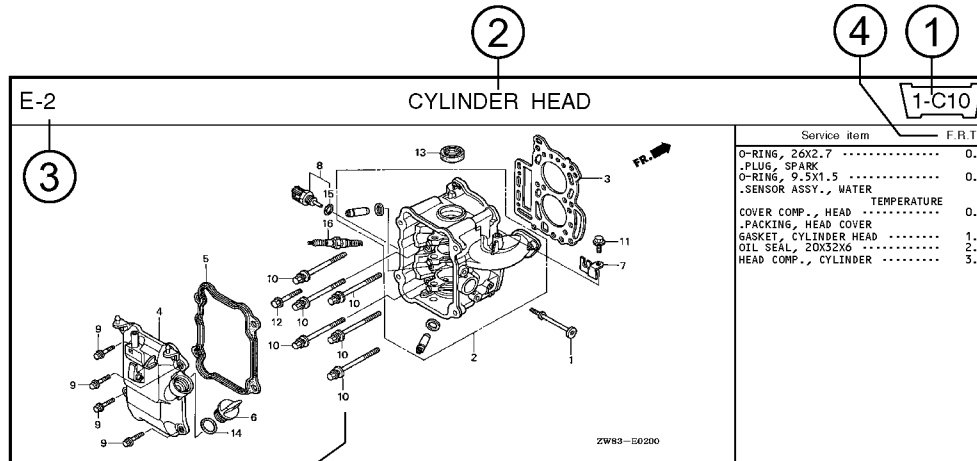
Ref No.

Page No.

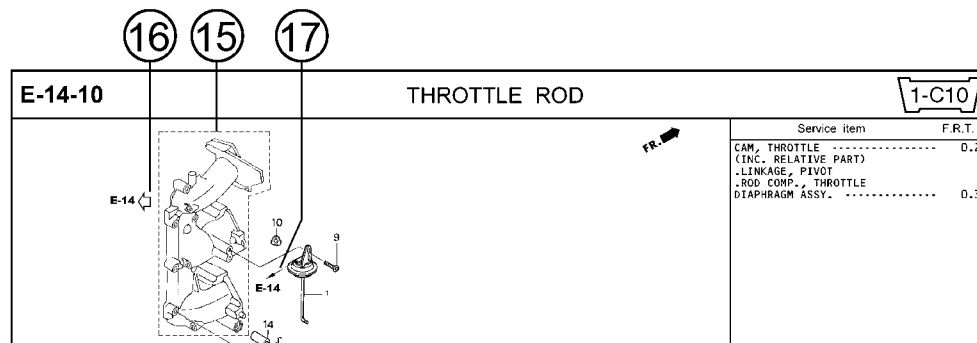
Ref. No.	Part No.	Description	Reqd. QTY						Serial No.	Parts catalogue code
			BF 9901	BFP 9901	BF 1001	BFP 1001	BF 1081	BFP 1081		
1	12166-ZW9-000	STOPPER, ENGINE SIDE	2	2	2	2	2	2		
2	12210-ZW9-000ZA	HEAD COMP., CYLINDER	1	1	1	1	1	1		
3	12251-ZW9-003	GASKET, CYLINDER HEAD	1	1	1	1	1	1		
4	12310-ZW9-000	COVER COMP., HEAD	1	1	1	1	1	1		
5	12312-ZW9-000	PACKINGS, HEAD COVER	1	1	1	1	1	1		
6	15611-921-000	CAP, OIL (NO GAUGE)	1	1	1	1	1	1		
7	16617-ZW9-000	HOLDER, CABLE	1	1	1	1	1	1	SC,SG	
	16617-ZW9-010		1	1	1	1	1	1	1001800 LHC,LHD	
			1	1	1	1	1	1	1001801 LHC,LHD	
8	35673-ZW5-003	SENSOR ASSY., WATER	1	1	1	1	1	1		
9	90003-ZW9-000	BOLT, FLANGE, 6X22	4	4	4	4	4	4		
10	90007-ZW9-003	BOLT, FLANGE, 8X83	6	6	6	6	6	6		
11	90011-ZW9-000	BOLT, FLANGE, 6X14(CT200)	1	1	1	1	1	1		
12	90020-ZW9-000	BOLT, FLANGE, 8X40	2	2	2	2	2	2		
13	91002-K19-003	OIL SEAL, 20X32X6	1	1	1	1	1	1		
14	91301-805-000	O-RING, 26X2.7	1	1	1	1	1	1		
15	91307-PK2-005	O-RING, 9.5X1.5(HONDA KIKAKI)	1	1	1	1	1	1		
16	98059-55916	PLUG, SPARK (CR5EH-9)	2	2	2	2	2	2		
	98059-55926	PLUG, SPARK (U16FER9)	2	2	2	2	2	2		

2000.09.20 E

Part catalogue structure



Ref. No.	Part No.	Description	Reqd. QTY						Serial No.	Parts catalogue code
			BF 9/9D1	BFP 9/9D1	BF 10D1	BFP 10D1	BF 10B1	BFP 10B1		
1	12166-zw9-000	STOPPER, ENGINE SIDE	2	2	2	2	2			
2	12210-zw9-000ZA	HEAD COMP., CYLINDER *NHS*	1	1	1	1	1			
3	12251-zw9-003	GASKET, CYLINDER HEAD	1	1	1	1	1			
4	12310-zw9-000	COVER COMP., HEAD	1	1	1	1	1			
5	12312-zw9-000	PACKING, HEAD COVER	1	1	1	1	1			
6	15611-921-000	CAP, OIL (NO GAUGE)	1	1	1	1	1			
7	16617-zw9-000	HOLDER, CABLE	1	1	1	1	1	SC,S6		
	16617-zw9-010		1	1	1	1	1	1001800 LHC,LHD		



① Address number

- Address No. is provided (in place of the page No.) to help you refer to the part with the part No. or part name.

② Block title ③ Block number

④ Service item/Flat rate time

⑤ Reference number

- Title number marked with the parenthesis or parentheses indicates that it continues from the previous page.

⑥ Part number ⑦ Honda color code

⑧ Description

⑨ Assemblies

- Sections framed with broken lines in the exploded view drawings are available as complete assemblies. (Their individual parts can also be obtained.)

⑩ Color description

⑪ Note

- Notes are shown with the parentheses in the part name column.

⑫ Required quantity

- Required QTY shown in the parenthesis or parentheses indicates the optional part.
- Required QTY marked with "N" Indicates the optional part that should be selected as needed.
- Required QTY indicates the number of the part used in the block.

⑬ Serial number

⑭ Type

- When the type column is blank, it indicates that the part is applicable to all types.
- As the type of the actual unit may differ from the "parts catalogue, type" please refer to "Models, types and applicable serial numbers" for confirmation.

⑮

- Parts enclosed within a dotted line are covered in a different block.

⑯

- A hollow arrow indicates the block No. for the parts enclosed within a dotted line .

⑰

- A solid arrow indicates the block No. the part in question is connected to.

When the parts were revised

Abbreviations used in the parts catalogue

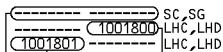
1



Be sure to check the serial number!!



Ref. No.	Part No.	Description	Reqd. QTY						Serial No.
			BF 9.9D1	BFP 9.9D1	BF 10D1	BFP 10D1	BF 10B1	BFP 10B1	
1	12166-ZW9-000	STOPPER, ENGINE SIDE	2	2	2	2	2	2	
2	12210-ZW9-000ZA	HEAD COMP., CYLINDER							
		NH8.....DARK GRAY	1	1	1	1	1	1	
3	12251-ZW9-003	GASKET, CYLINDER HEAD	1	1	1	1	1	1	
4	12310-ZW9-000	COVER COMP., HEAD	1	1	1	1	1	1	
5	12312-ZW9-000	PACKING, HEAD COVER	1	1	1	1	1	1	
6	15611-921-000	CAP, OIL (NO GAUGE)	1	1	1	1	1	1	
7	16617-ZW9-000	HOLDER, CABLE (###)	1	1	1	1	1	1	
	16617-ZW9-010		1	1	1	1	1	1	



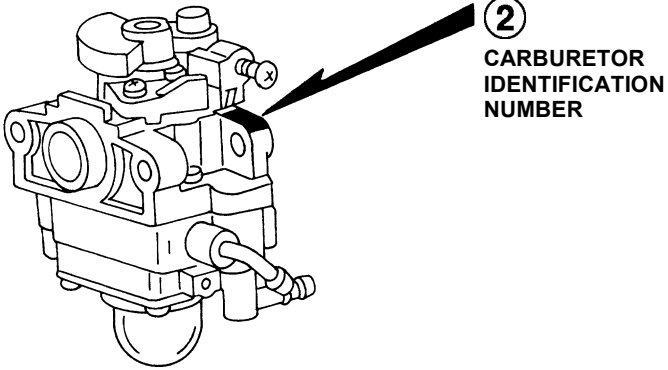
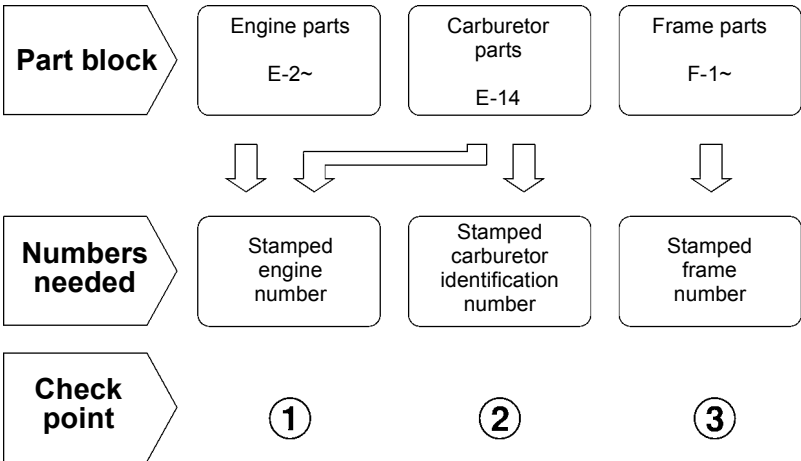
The number has been used from the initial model without revision. When shown at the left side, it is applicable to the models of No.1001801 and the subsequent numbers. When shown at the right side, it is applicable to the models up to No.1001800.

• The parts listed with "###" at the end of the parts name have limited supply period (parts not for sale).

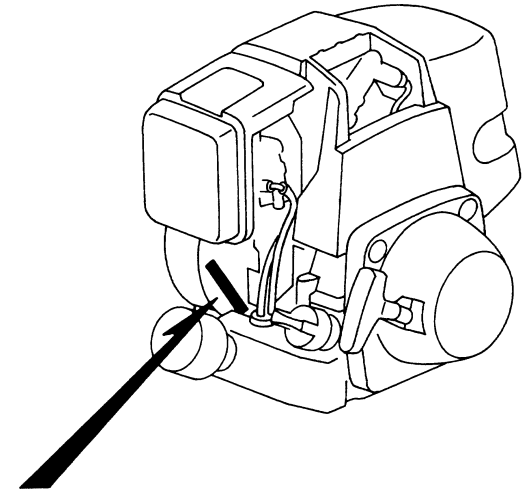
• The following abbreviations are used in the parts name column.

- A Ampere
- A.C. Alternating current
- ASSY. Assembly
- AT. Automatic transmission
- C.D.I. Capacitive discharge ignition
- COMP. ... Complete
- D.C. Direct current
- EX. Exhaust
- G.F.C.I ... Ground fault circuit interruptor
- HEX. Hexagonal
- H.S.T. Hydrostatic transmission
- FR.Front
- IN.Inlet
- L (100L) .Link (100 Links)
- L.Left
- MMMillimeter
- MT.Manual Transmission
- P.T.O.Power take off
- R.Right
- RR.Rear
- STD.Standard
- T (22T) ...Tooth (22 Teeth)
- VVolt
- WWatt

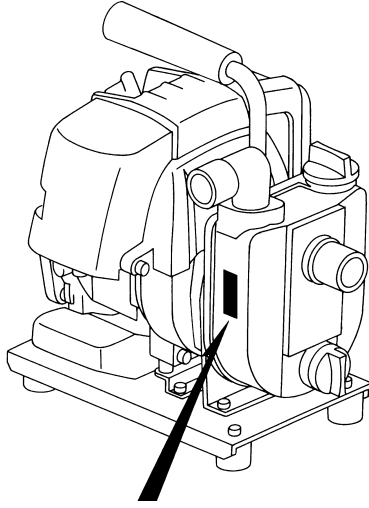
How to check the part block and serial numbers



DYE9-B



DYE9-A



DYE9-C

Models, parts catalogue codes and applicable serial numbers

1

- Models, parts catalogue codes and applicable serial Nos. given in this parts catalogue can be identified as follows.

Model	Type	Parts catalogue type	Engine		Applicable engine serial No.	Applicable frame serial No.	Applicable carburetor identification No.	
			Model	Type				
WX10	A1	A1	GX31	AY2	GCAG-1000001 ~ 9999999	WZBR-1000001 ~ 9999999	WYL-68/75/75A/97/127	
	A2	A2						
	A4	A4			GCAG-1000001 ~ 2099999	WZBR-1000001 ~ 1099999		WYL-127
		A4/A						

* Of carburetor identification numbers, only the portions underlined in the example below are used for registration.

WYL 63

Features of each type

- See the following table for the features of each type.

Specification	Model	WX10			
	Type	A1	A2	A4	A4/A
Strainer		●	●	●	●
Hose band		●	●	●	●
Hose coupling		●	●	●	●
Hose clamp ring		●	●	●	●
5m suction hose			●	●	●

Fuel hose, general purpose hoses and vinyl hose

- The standard part fuel hose, general purpose hose and vinyl hose may be substituted by the coiled bulk part.
- When ordering the standard part fuel hose, general purpose hose and vinyl hose use the bulk part number written in the parts catalog in brackets () underneath the part name.
- When exchanging the hose, cut and use at the specified length as mentioned in the part name.
(For the method of cutting the bulk part, and method of filling out orders etc., please refer to the instructions issued with the bulk part.)

Bulk part number of fuel hose, general purpose hose and vinyl hose.

Example: 9 5 0 0 1 - 7 5 0 0 1 - 5 0 M

Bulk part number:
Refers to the bulk part.

Marking code (fuel hose and general purpose hose)

Change code (Vinyl hose)

Indicates number mark or change sequence, however, the code for the bulk part must be strictly 0 (zero).

Types of code:

- | | | | | | |
|-------------|--|----------------|--|--------------|---|
| • Fuel hose | 2: Red outside braid
(3 mm inside dia. only) | • General hose | 1: Ash gray
2: Ash gray
3: Black
5: Black | • Vinyl hose | 1: Clear
2: Black
3: Light red
6: Light red
7: Pale black |
| | 5: Black inside braid | | | | |
| | 3: Red (3 mm inside dia. only) | | | | |
| | 4: Ash gray with red stripe
(3 mm inside dia. only) | | | | |
| | 6: Black | | | | |

Lengths:

- 001: 1 m (standard)
003: 3 m
008: 8 m } Application or specification of some parts is not settled.

I.D code: (fuel hose and general purpose hose)

- | | | | | |
|------------|--------------------|--------------------|-----------------------------|-----------------------------|
| 30: 3.0 mm | 50: 5.0 mm | 70: 7.0 mm | 11: 11 mm | 12: 12 (outside dia. 17) mm |
| 35: 3.5 mm | 55: 5.3 mm, 5.5 mm | 75: 7.3 mm, 7.5 mm | 91: 12 (outside dia. 15) mm | 14: 14 mm |
| 45: 4.5 mm | 65: 6.5 mm | 80: 8.0 mm | 92: 12 (outside dia. 16) mm | 17: 17 mm |

ID./OD. code: (vinyl hose)

- | | | | | |
|-------------------------|--------------------------|---------------------------|---------------------------|---------------------------|
| 01: ID. 2.9, OD. 6.8 mm | 12: ID. 5.0, OD. 7.0 mm | 21: ID. 8.0, OD. 9.0 mm | 37: ID. 11.0, OD. 15.0 mm | 50: ID. 16.0, OD. 19.0 mm |
| 03: ID. 3.0, OD. 6.0 mm | 10: ID. 5.0, OD. 8.0 mm | 23: ID. 8.0, OD. 12.0 mm | 38: ID. 12.0, OD. 13.0 mm | 55: ID. 17.5, OD. 20.5 mm |
| 05: ID. 3.5, OD. 6.5 mm | 11: ID. 5.0, OD. 9.0 mm | 25: ID. 9.0, OD. 11.0 mm | 39: ID. 12.0, OD. 14.0 mm | 60: ID. 22.0, OD. 27.0 mm |
| 07: ID. 4.0, OD. 7.0 mm | 14: ID. 6.0, OD. 9.0 mm | 27: ID. 9.0, OD. 13.0 mm | 40: ID. 12.0, OD. 16.0 mm | |
| 08: ID. 4.5, OD. 6.5 mm | 17: ID. 7.0, OD. 9.0 mm | 33: ID. 10.0, OD. 14.0 mm | 43: ID. 13.0, OD. 15.0 mm | |
| 09: ID. 4.5, OD. 8.0 mm | 19: ID. 7.0, OD. 11.0 mm | 36: ID. 11.0, OD. 13.0 mm | 45: ID. 14.0, OD. 18.0 mm | |

Hose type:

- 1: Fuel hose
3: Vinyl hose
5: General hose

⊙ **CAUTION: It is DANGEROUS to confuse the fuel hose with the general purpose hose or vinyl hose.**

Never use a general purpose hose or vinyl hose in place of a fuel hose or vice versa. Always use the correct bulk part in the parts catalogue, according to the service manual or the instructions issued with the bulk part.

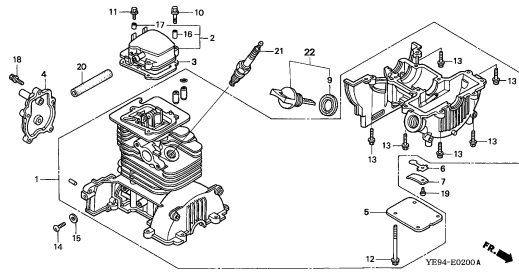
ENGINE GROUP

B 8

E-2

CRANKCASE SET

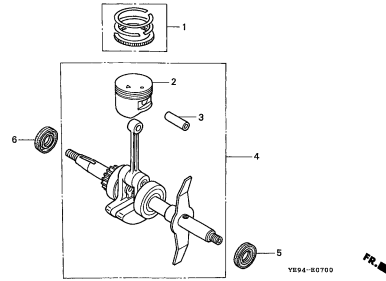
C 1



E-7

PISTON/CRANKSHAFT

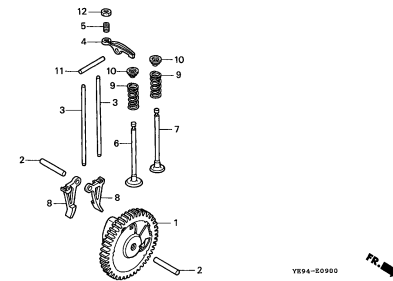
C 3



E-9

CAMSHAFT

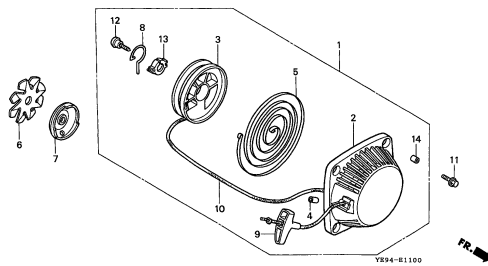
C 4



E-11

RECOIL STARTER

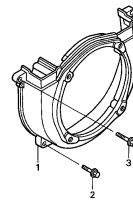
C 5



E-12

FAN COVER

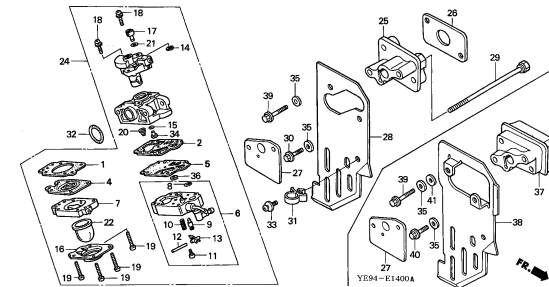
C 6



E-14

CARBURETOR

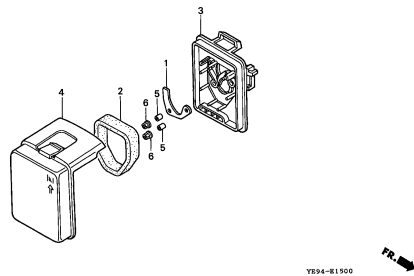
C 7



E-15

AIR CLEANER

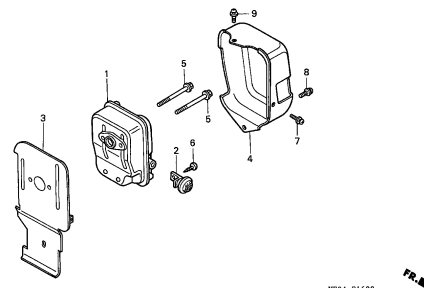
C 10



E-16

MUFFLER

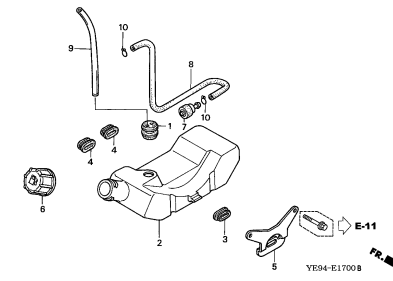
C 11



E-17

FUEL TANK

C 12



2

8

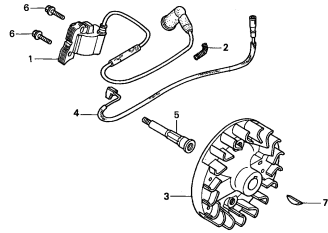
ENGINE GROUP

B 9

E-19

FLYWHEEL/IGNITION COIL

C13



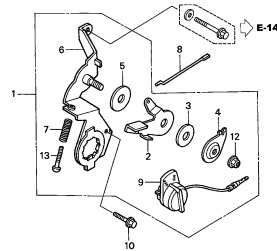
Y894-E1900



E-22

CONTROL

C14



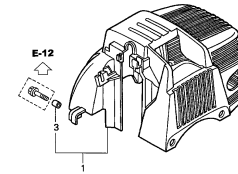
Y894-E2200 8



E-27

TOP COVER

C15



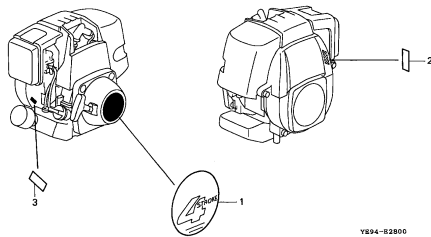
Y894-E2700 8



E-28

LABEL

C16

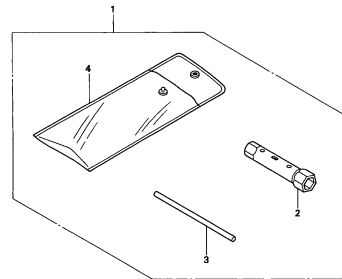


Y894-E2800

E-29

TOOL

D 1



Y894-E2900

2

FRAME GROUP

B10

F-1 **E 1**

CASING

YE94-F0100

F-2 **E 3**

STRAINER/HOSE

YE94-F0200

F-3 **E 4**

FRAME

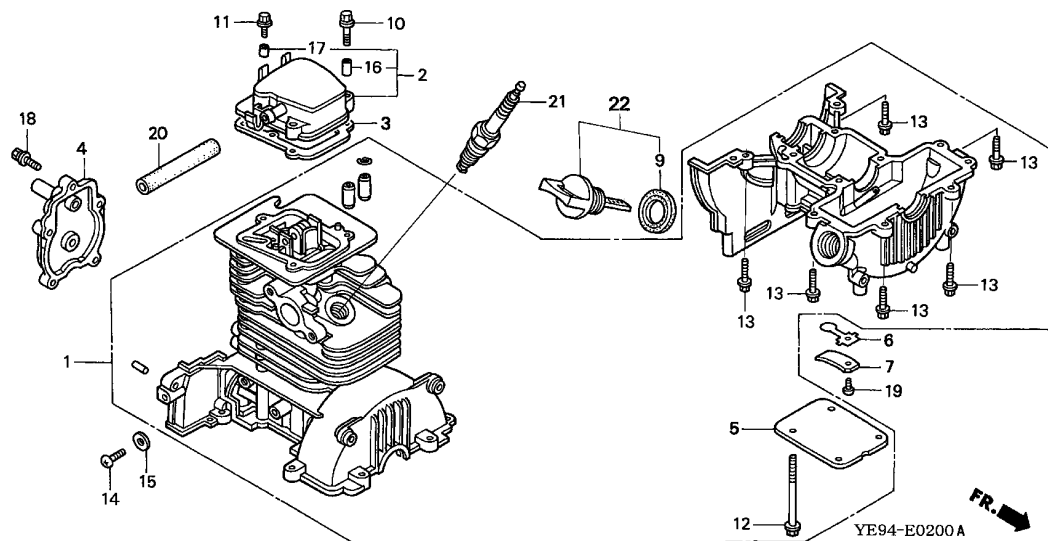
YE94-F0300

F-4 **E 5**

LABEL

YE94-F0400

3

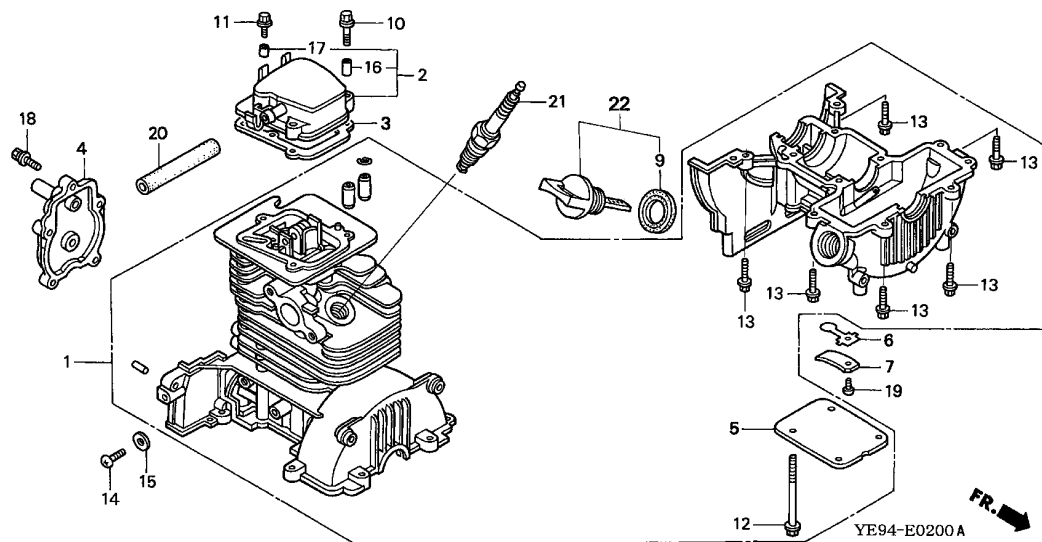


Service item

F.R.T.

Ref. No.	Part No.	Description	Reqd. QTY		Serial No.	Parts catalogue code
			wx	10		
1	11010-ZM5-000	CRANKCASE SET	1	-----	1193155 A1,A2	
	11010-ZM5-020	1	-----	1533766 A4	
	11010-ZM5-030	1	-----	1193156 1533766 A1,A2	
	11010-ZM5-030	1	-----	----- A4/A	
2	12310-ZM3-010	COVER COMP., HEAD	1	-----	1533767 ----- A1,A2,A4	
	12310-ZM3-003	1	-----	1140427 A1,A2	
	12310-ZM3-003	1	-----	----- A4,A4/A	
3	12312-ZM3-020	PACKING, HEAD COVER	1	-----	1140428 ----- A1,A2	
4	14121-ZM5-000	COVER, CAMSHAFT	1	-----	1193155 A1,A2	
	14121-ZM5-010	1	-----	----- A4,A4/A	
	14121-ZM5-010	1	-----	1193156 ----- A1,A2	
5	15511-ZM3-000	COVER, OIL OUTLET VALVE	1			
6	15571-ZM3-003	VALVE, OIL OUTLET	1			
7	15572-ZM3-000	PLATE, STOPPER	1			
9	15625-ZE1-003	PACKING, OIL FILLER CAP	1			
10	90001-ZM3-000	BOLT, FLANGE, 5X22	2			
11	90002-ZM3-000	BOLT, FLANGE, 5X14	1			
12	90003-ZM3-000	BOLT, FLANGE, 5X55	4			
13	90005-ZM3-000	BOLT, FLANGE, 5X18	6			
14	90011-ZM3-000	SCREW, PAN, 6X8	1			
15	90481-GW3-000	WASHER, SEALING, 6.5MM	1			
16	91501-ZM3-010	COLLAR, HEAD COVER	2			
17	91506-ZM3-000	COLLAR A, HEAD COVER	1			
18	93401-04016-00	BOLT-WASHER, 4X16	5			
19	93500-03005-0A	SCREW, PAN, 3X5	1			





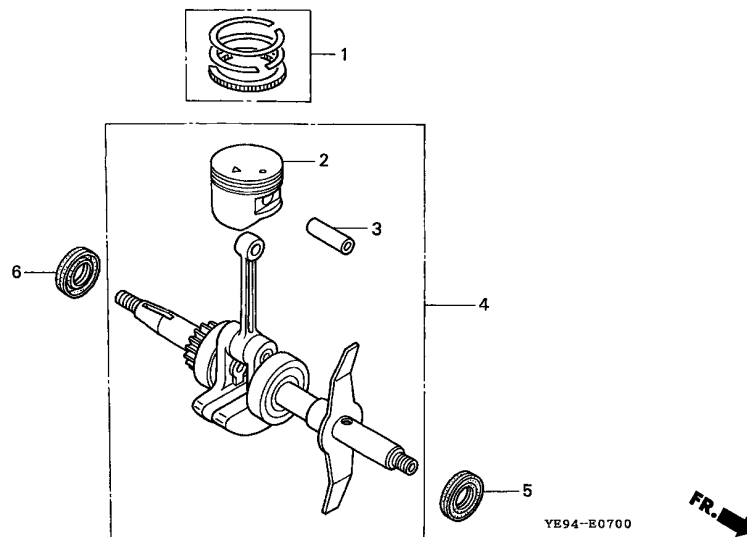
YE94-E0200A



Ref. No.	Part No.	Description	Reqd. QTY	Serial No.	Parts catalogue code
			wx 10		
20	95005-70068-30	TUBE, 7X68(95005-70001-30M)	1		
21	98056-55757	PLUG, SPARK (U16FSR-UB)	1		
	98056-55777	PLUG, SPARK (CR5HSB)	1		
22	15600-ZM3-003	CAP ASSY., OIL FILLER	1		

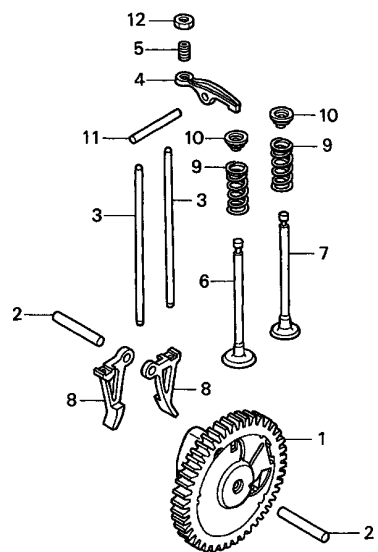
Service item

F.R.T.



Ref. No.	Part No.	Description	Reqd. QTY		Serial No.	Parts catalogue code	
			wx	10			
1	13010-ZM5-000	RING SET, PISTON	1				
2	13101-ZM5-020	PISTON	1		1382005	A1,A2	
	13101-ZM5-030	1		1382006	A4,A4/A	
		1			A1,A2	
3	13111-ZM5-000	PIN, PISTON	1				
4	13310-ZM5-010	CRANKSHAFT COMP.	1		1209678	A1,A2	
	13310-ZM5-030	1		1209679	1382005	A1,A2
	13310-ZM5-040	1			A4,A4/A	
		1		1382006	A1,A2	
5	91213-ZM3-003	OIL SEAL, 12X25X6	1				
6	91214-ZM3-003	OIL SEAL, 15X25X6	1				





YE94-B0900



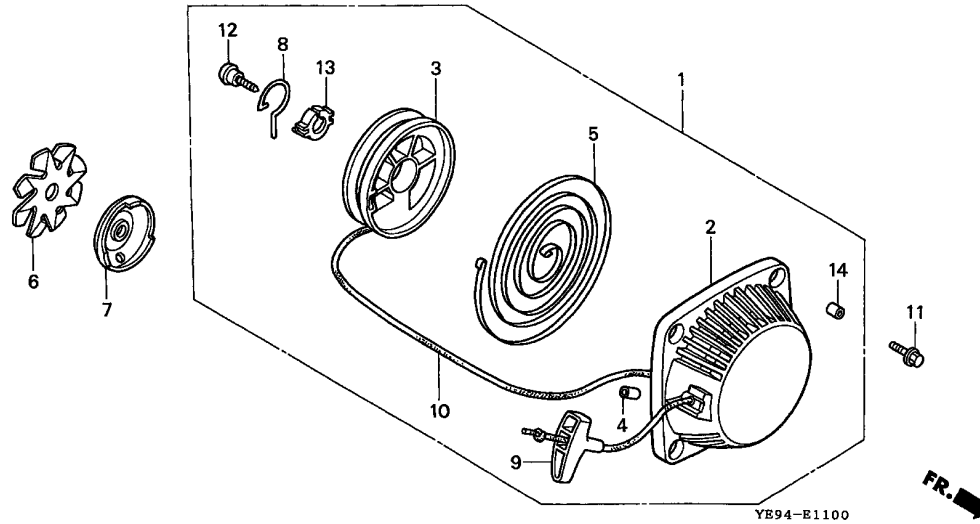
Service item

F.R.T.

Ref. No.	Part No.	Description	Reqd. QTY wx 10	Serial No.	Parts catalogue code
1	14100-ZM3-010	CAMSHAFT ASSY.	1		
2	14126-ZM3-000	ROLLER (5X23.8)	2		
3	14410-ZM3-000	ROD, PUSH	2		
4	14431-ZM3-000	ARM, VALVE ROCKER	2		
5	14451-ZM3-000	PIVOT, ROCKER ARM	2		
6	14711-ZM5-000	VALVE, IN.	1		
7	14721-ZM3-000	VALVE, EX.	1		
8	14731-ZM3-003	LIFTER, VALVE	2		
9	14751-ZM3-010	SPRING, VALVE	2		
10	14771-ZM3-010	RETAINER, VALVE SPRING	2		
11	41313-PL3-000	ROLLER, 4X28	1		
12	90206-ZM3-000	NUT, TAPPET ADJUSTING	2		

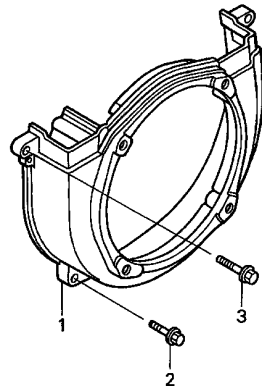
Service item

F.R.T.



Ref. No.	Part No.	Description	Reqd. QTY WX 10	Serial No.	Parts catalogue code
1	28400-ZM3-003ZA	STARTER ASSY., RECOIL *NH1*.....BLACK	1		
2	28414-ZM3-003	CASE, RECOIL STARTER	1		
3	28421-ZM3-003	REEL, RECOIL STARTER	1		
4	28433-ZM3-003	GUIDE, ROPE	1		
5	28442-ZM3-003	SPRING, RECOIL STARTER	1		
6	28447-ZM3-000	FAN, RATCHET	1		
7	28451-ZM3-003	PULLEY, RECOIL STARTER	1		
8	28459-ZM3-003	ARM, SWING	1		
9	28461-ZM3-003	KNOB, RECOIL STARTER	1		
10	28462-ZM3-003	ROPE, RECOIL STARTER	1		
11	90005-ZM3-000	BOLT, FLANGE, 5X18	4		
12	90012-ZM3-003	SCREW, SETTING	1		
13	91504-ZM3-003	COLLAR	1		
14	91505-ZM3-003	COLLAR	4		

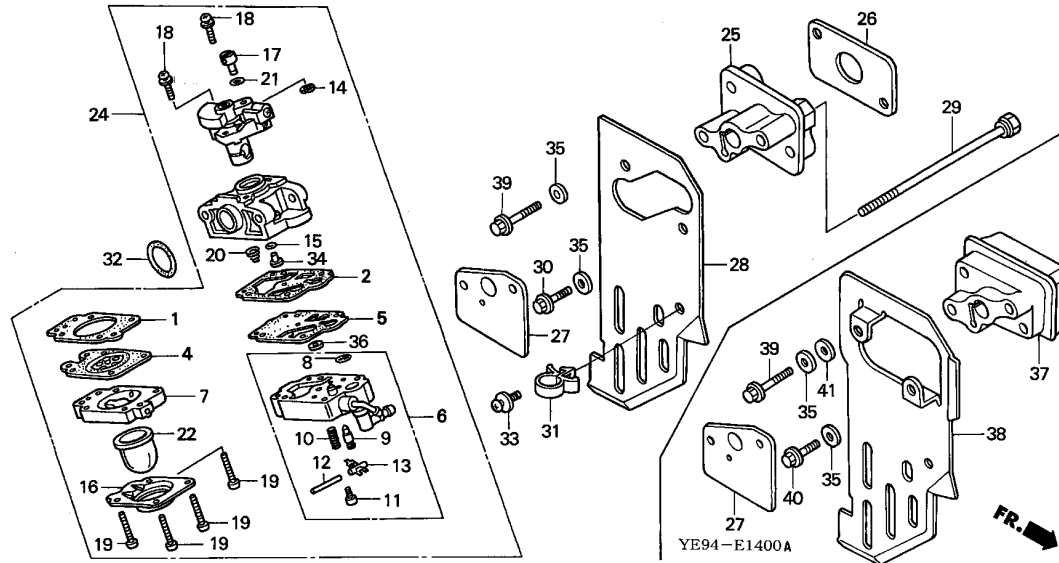
←FR.



YE94-E1200

Service item	F.R.T.

Ref. No.	Part No.	Description	Reqd. QTY	Serial No.	Parts catalogue code
			wx 10		
1	19611-ZM5-000	COVER, FAN	1		
2	90005-ZM3-000	BOLT, FLANGE, 5X18	2		
3	90112-GK8-010	BOLT, FLANGE, 5X22	2		

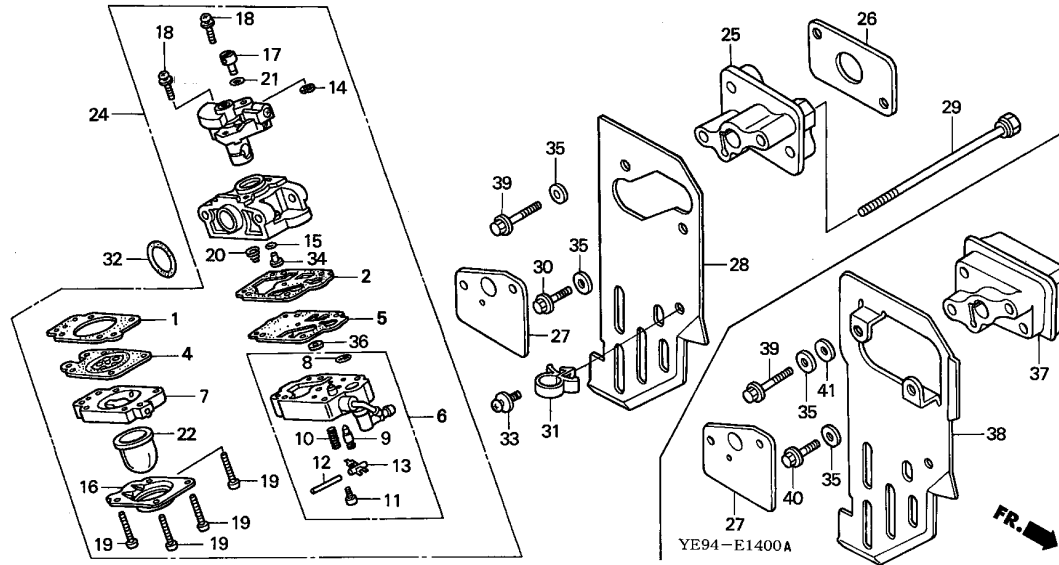


Service item

F.R.T.

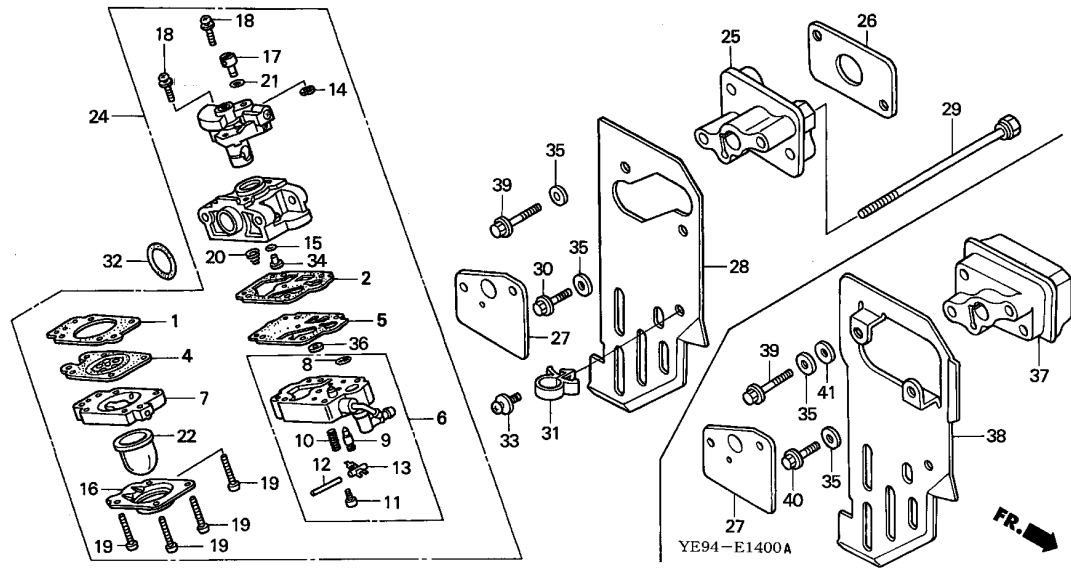
Ref. No.	Part No.	Description	Reqd. QTY	Serial No.	Parts catalogue code
			wx 10		
1	16010-ZM3-004	GASKET, METERING DIAPHRAGM ..	1		
2	16011-ZM3-004	GASKET, PUMP	1	----- WYL 75 A1,A2	
	16011-ZM3-014	1	----- A4,A4/A	
			1	WYL 75A ----- A1,A2	
4	16013-ZM3-004	DIAPHRAGM ASSY., METERING ...	1		
5	16014-ZM3-004	DIAPHRAGM, PUMP	1		
6	16015-ZM3-004	BODY ASSY., PUMP	1	----- WYL 75A A1,A2	
	16015-ZM3-802	1	----- A4,A4/A	
			1	WYL 97 ----- A1,A2	
7	16017-ZM3-004	BODY ASSY., AIR PURGE	1		
8	16018-ZM3-004	SCREEN, INLET	1	----- WYL 75A A1,A2	
	16018-ZM3-802	1	----- A4,A4/A	
			1	WYL 97 ----- A1,A2	
9	16019-ZM3-004	VALVE, INLET NEEDLE	1		
10	16020-ZM3-004	SPRING, METERING LEVER	1		
11	16021-ZM3-004	SCREW, METERING LEVER PIN ...	1		
12	16022-ZM3-004	PIN, METERING LEVER	1		
13	16023-ZM3-004	LEVER, METERING	1		
14	16024-ZM3-004	RING, SPRING RETAINING	1		
15	16025-ZM3-004	O-RING	1		
16	16026-ZM3-004	COVER, PRIMER PUMP	1		
17	16027-ZM3-004	SWIVEL	1		
18	16028-ZM3-004	SCREW, THROTTLE COLLAR	2		
19	16029-ZM3-004	SCREW, PUMP COVER	4		
20	16030-ZM3-004	SPRING, PUMP	1		





Ref. No.	Part No.	Description	Reqd. QTY wx 10	Serial No.	Parts catalogue code	
21	16031-ZM3-004	WASHER	1			
22	16032-ZM3-004	PUMP, PRIMER	1			
24	16100-ZM5-802	CARBURETOR ASSY. (WYL 68) ...	1	----- 1064797	A1,A2	
	16100-ZM5-823	CARBURETOR ASSY. (WYL 75) ...	1	1064798	1161753 A1,A2	
	16100-ZM5-824	CARBURETOR ASSY. (WYL 75A) ...	1	1161754	1200887 A1,A2	
	16100-ZM5-806	CARBURETOR ASSY. (WYL 97) ...	1	1200888	1432192 A1,A2	
	16100-ZM5-807	CARBURETOR ASSY. (WYL 127) ..	1	-----	A4,A4/A	
25	16211-ZM3-000	INSULATOR, CARBURETOR	1	1432193	----- A1,A2	
				-----	1412244 A1,A2	
26	16212-ZM3-000	PACKING, INSULATOR	1			
27	16221-ZM3-000	PACKING, CARBURETOR	1	-----	1200403 A1,A2	
	16221-ZM3-G10	1	-----	A4,A4/A	
				1	1200404	----- A1,A2
28	19651-ZM3-000	GUIDE, AIR INTAKE	1	-----	1412244 A1,A2	
29	90010-ZM3-000	BOLT, HEX., 5X75	2			
30	90112-GK8-010	BOLT, FLANGE, 5X22	1	-----	1412244 A1,A2	
31	90659-680-013	CLIP, WIRE HARNESS	1			
32	91301-ZM3-000	O-RING, 14.8X2.4	1			
33	93894-05010-00	SCREW-WASHER, 5X10	1			
34	99101-ZM3-0400	JET (#40)	1	-----	WYL 68 A1,A2	
	99101-ZM3-0410	JET (#41)	(1)	-----	WYL 68 A1,A2	
	99101-ZM3-0420	JET (#42)	(1)	-----	WYL 68 A1,A2	
	99101-ZM3-0400	JET (#40)	(1)	WYL 75	WYL 97 A1,A2	
	99101-ZM3-0410	JET (#41)	(1)	WYL 75	WYL 126 A1,A2	
	99101-ZM3-0420	JET (#42)	1	WYL 75	WYL 97 A1,A2	
	99101-ZM3-0330	JET (#33.5)	(1)	-----	A4,A4/A	
			(1)	WYL 127	----- A1,A2	

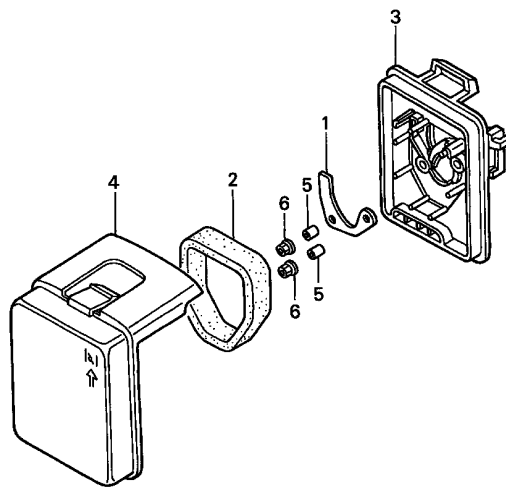
2



Ref. No.	Part No.	Description	Reqd. QTY		Serial No.	Parts catalogue code
			wx	10		
34)	99101-ZM3-0350	JET (#35.5)	1		----- A4	
	99102-ZM3-0340	JET (#34.5)	(1)		WYL 127 WYL 126 A1,A2	
	99102-ZM3-0350	JET (#35.5)	(1)		WYL 127 ----- A4,A4/A	
			1		----- A1,A2	
			1		----- A4,A4/A	
35	18292-167-890	PACKING, PROTECTOR	2		WYL 127 ----- A1,A2	
			2		1064798 ----- A4,A4/A	
					----- A1,A2	
36	16035-ZM3-802	FILTER, FUEL INLET	1		----- A4,A4/A	
			1		WYL 97 ----- A1,A2	
37	16211-ZM3-U30	INSULATOR, CARBURETOR	1		----- A4,A4/A	
			1		1412245 ----- A1,A2	
38	19651-ZM3-U30	GUIDE, AIR INLET	1		----- A4,A4/A	
			1		1412245 ----- A1,A2	
39	90103-P4V-010	BOLT, FLANGE, 5X35	1		----- A4,A4/A	
40	90112-ZM3-U30	BOLT, FLANGE, 5X32	1		----- A4,A4/A	
			1		1412245 ----- A1,A2	
41	94101-05800	WASHER, PLAIN, 5MM	1		----- A4,A4/A	
			1		1412245 ----- A1,A2	

Service item

F.R.T.

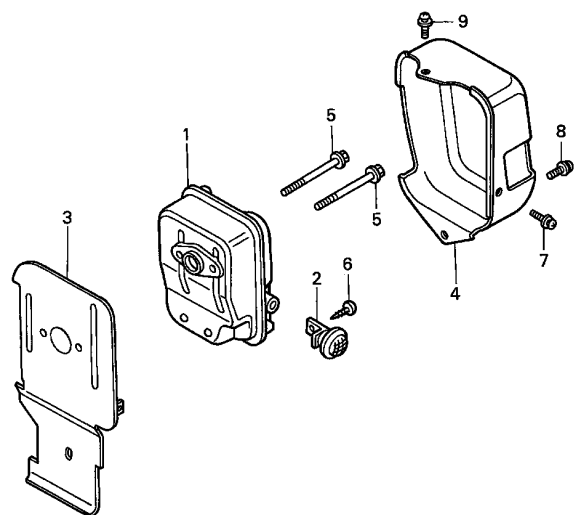


YB94-E1500



Ref. No.	Part No.	Description	Reqd. QTY	Serial No.	Parts catalogue code
			WX 10		
1	17204-ZM3-000	PLATE, OIL TRAP	1		
2	17211-ZM3-000	ELEMENT, AIR CLEANER	1		
3	17220-ZM3-000ZA	CASE COMP., AIR CLEANER			
		R8.....BRIGHT RED	1	----- 1465505	A1,A2
	17220-ZM3-010ZA	*R8*.....BRIGHT RED	1	----- 1795195	A4
			1	1465506	1795195 A1,A2
	17220-ZM3-010ZD	*R291R*.....DARK POWER RED	1	-----	A4/A
			1	1795196	----- A1,A2,A4
4	17231-ZM3-000ZA	COVER, AIR CLEANER			
		R8.....BRIGHT RED	1	----- 1465505	A1,A2
	17231-ZM3-010ZA	*R8*.....BRIGHT RED	1	----- 1795279	A4
			1	1465506	1795279 A1,A2
	17231-ZM3-010ZD	*R291R*.....DARK POWER RED	1	-----	A4/A
			1	1795280	----- A1,A2,A4
5	91503-ZM3-000	COLLAR, AIR CLEANER	2		
6	94050-05000	NUT, FLANGE, 5MM	2		

Service item F.R.T.



YE94-E1600

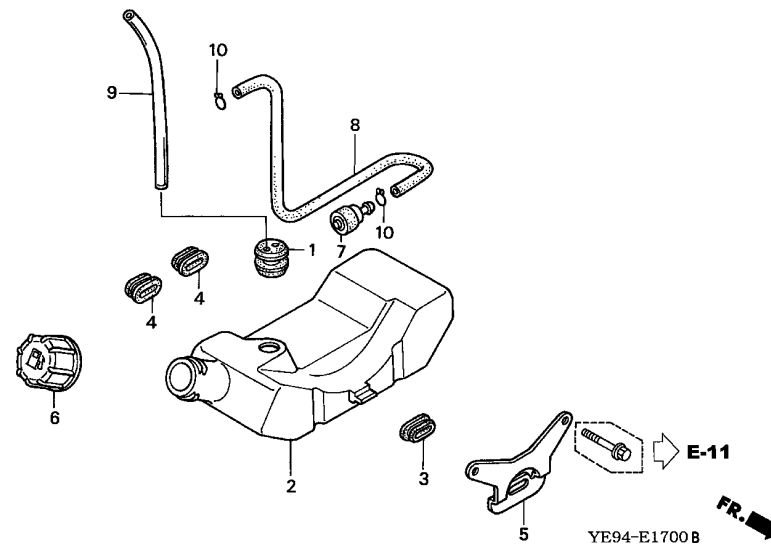


Ref. No.	Part No.	Description	Reqd. QTY wx 10	Serial No.	Parts catalogue code
1	18310-ZM3-800	MUFFLER COMP.	1		
2	18355-ZM3-801	ARRESTER, SPARK	1		
3	18515-ZM3-000	GUIDE, AIR EX.	1		
4	19722-ZM3-810	INNER COVER, TOP	1		
5	90004-ZM3-000	BOLT, FLANGE, 5X50	2		
6	90055-ZE1-000	SCREW, TAPPING, 4X6	1		
7	93891-05008-00	SCREW-WASHER, 5X8	1		
8	93894-05010-00	SCREW-WASHER, 5X10	1		
9	93894-05016-00	SCREW-WASHER, 5X16	1		



Service item

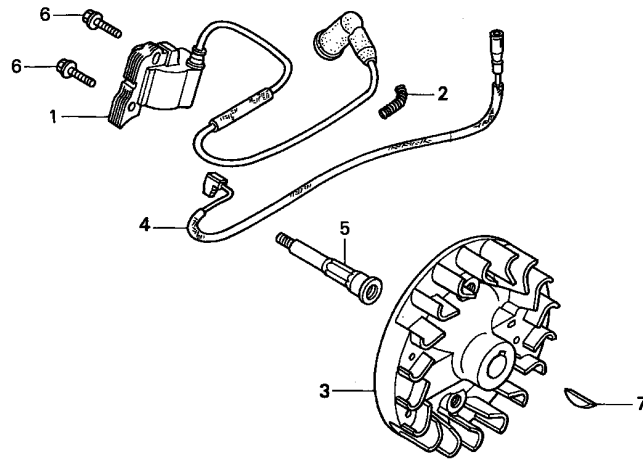
F.R.T.



Ref. No.	Part No.	Description	Reqd. QTY	Serial No.	Parts catalogue code
			wx 10		
1	17504-ZM3-003	GROMMET, FUEL TUBE	1		
2	17511-ZM5-003	TANK, FUEL	1	----- A1,A2,A4	
	17511-ZM5-013	1	----- A4/A	
3	17532-ZM3-010	RUBBER A, TANK MOUNTING	1		
4	17533-ZM3-000	RUBBER B, TANK MOUNTING	2		
5	17561-ZM3-010	STAY, FUEL TANK	1		
6	17620-ZM3-043	CAP ASSY., FUEL TANK	1	----- A1,A2,A4	
	17620-ZM3-053	1	----- A4/A	
7	17672-ZM3-003	FILTER, FUEL	1		
8	17701-ZM3-003	TUBE, FUEL	1		
9	17702-ZM3-003	TUBE, FUEL RETURN	1		
10	91401-ZM3-003	CLIP, TUBE	2		

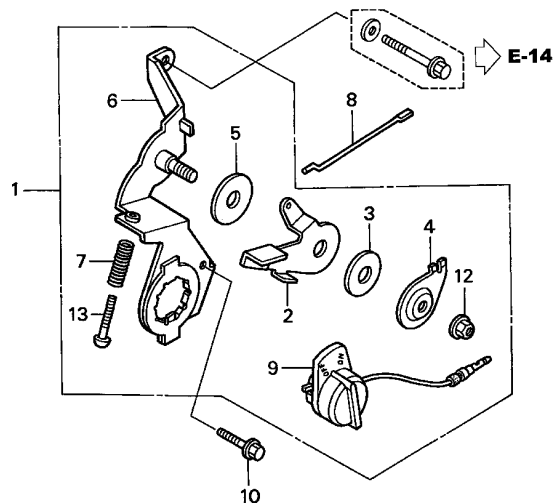
Service item

F.R.T.



YB94-E1900

Ref. No.	Part No.	Description	Reqd. QTY wx 10	Serial No.	Parts catalogue code
1	30500-ZM3-003	COIL ASSY., IGNITION	1		
2	30519-ZM3-000	TUBE A, CORRUGATED (7X18) ...	1		
3	31110-ZM5-800	FLYWHEEL COMP.	1		
4	32195-ZM5-800	CORD, STOP SWITCH	1		
5	40215-ZM5-G00	SHAFT, P.T.O.	1		
6	93401-05016-00	BOLT-WASHER, 5X16	2		
7	94401-16120	KEY, WOODRUFF, 16X12	1		



YE94-E2200 B

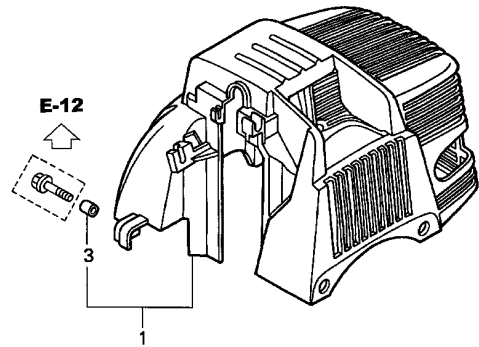
Service item

F.R.T.

Ref. No.	Part No.	Description	Reqd. QTY wx 10	Serial No.	Parts catalogue code
1	16500-ZM5-800	CONTROL ASSY.	1	----- 1412244	A1,A2
	16500-ZM5-801	1	-----	A4,A4/A
			1	1412245	----- A1,A2
2	16571-ZM5-800	LEVER, CONTROL	1		
3	16574-ZE1-000	SPRING, LEVER	1		
4	16575-ZH8-000	WASHER, CONTROL LEVER	1		
5	16578-ZE1-000	SPACER, CONTROL LEVER	1		
6	16580-ZM5-800	BASE COMP., CONTROL	1	----- 1412244	A1,A2
	16580-ZM5-801	1	-----	A4,A4/A
			1	1412245	----- A1,A2
7	16584-883-300	SPRING, CONTROL ADJUSTING ...	1		
8	17841-ZM5-800	ROD, THROTTLE	1		
9	36100-ZE1-015	SWITCH ASSY., ENGINE STOP ...	1		
10	90005-896-000	BOLT, FLANGE, 5X16	1		
12	90114-SAO-000	NUT, SELF-LOCK, 6MM	1		
13	93500-05025-0A	SCREW, PAN, 5X25	1		

Service item

F.R.T.



YE94-E2700 B

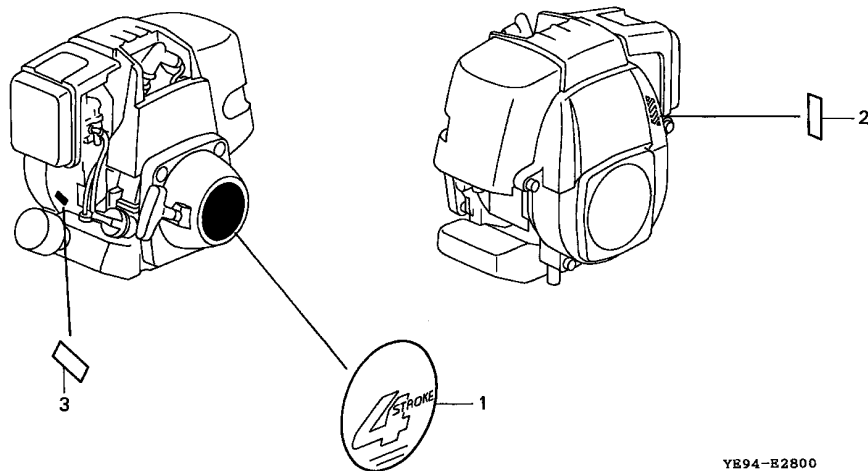


Ref. No.	Part No.	Description	Reqd. QTY		Serial No.	Parts catalogue code
			WX			
1	19720-ZM3-000ZA	COVER COMP., TOP				
		R8.....BRIGHT RED	1	-----	1795195	A1,A2,A4
	19720-ZM3-000ZB	*R280*.....POWER RED	1	-----		A4/A
			1	-----	1795196	A1,A2,A4
3	91502-ZM3-000	COLLAR, TOP COVER		2		



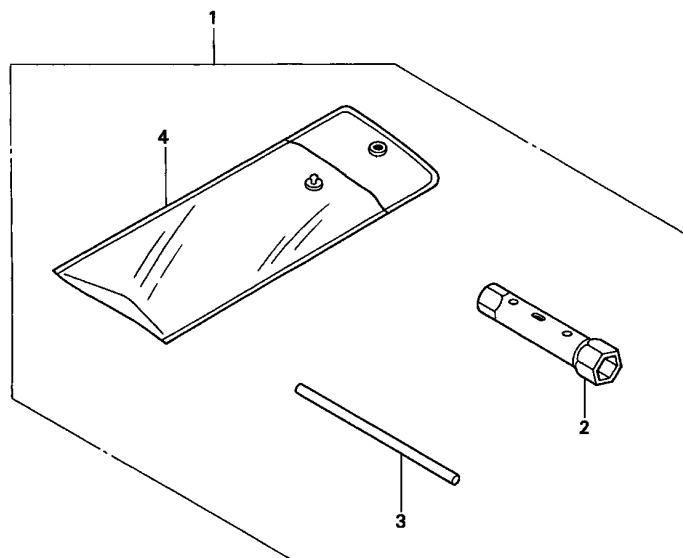
Service item

F.R.T.



YE94-B2800

Ref. No.	Part No.	Description	Reqd. QTY WX 10	Serial No.	Parts catalogue code
1	87521-ZM5-G00	EMBLEM (WX10)	1	----- A1	
	87521-ZM5-G01	1	----- 1945262 A2,A4	
			1	----- A4/A	
2	87532-ZM3-G00	MARK, THROTTLE INDICATION ...	1	1945263 ----- A2,A4	
3	87601-ZM5-G10	MARK, TYPE (AY2)	1		

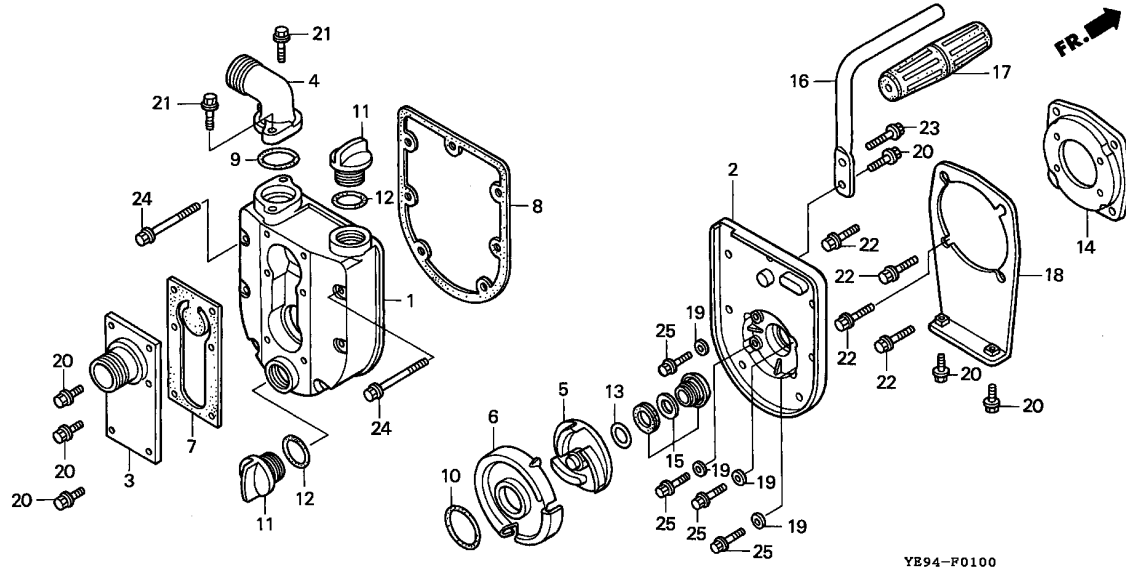


YE94-B2900

Service item	F.R.T.

Ref. No.	Part No.	Description	Reqd. QTY	Serial No.	Parts catalogue code
			wx 10		
1	89000-ZM3-000	TOOL KIT	(1)		
2	89216-045-010	WRENCH, SPARK PLUG	(1)		
3	99005-01000	BAR A, HANDLE	(1)		
4	99008-01600	BAG, TOOL, 160MM	(1)		





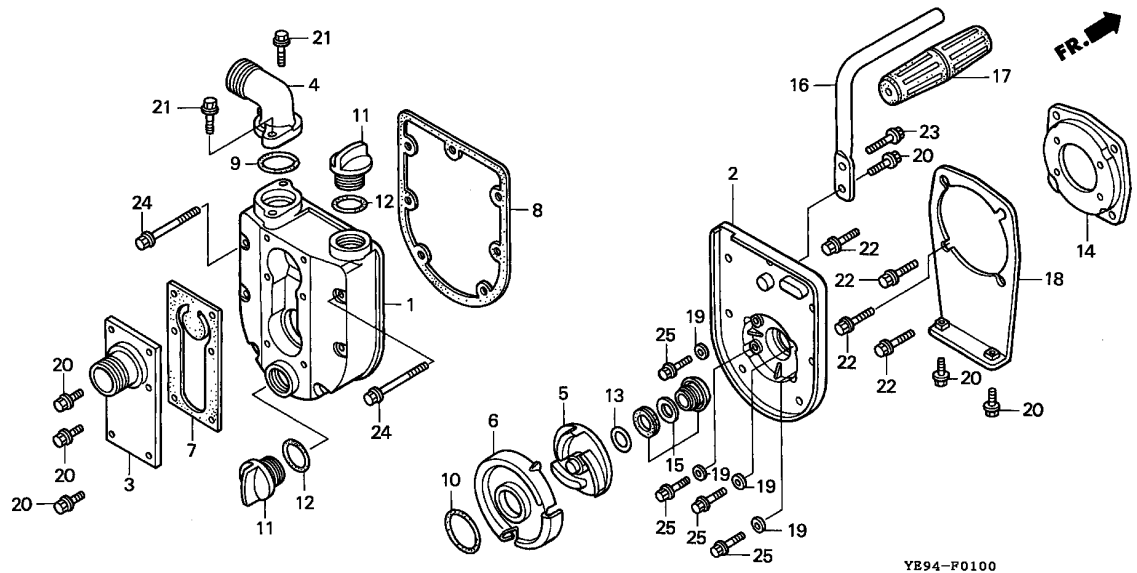
YE94-P0100

Service item

F.R.T.

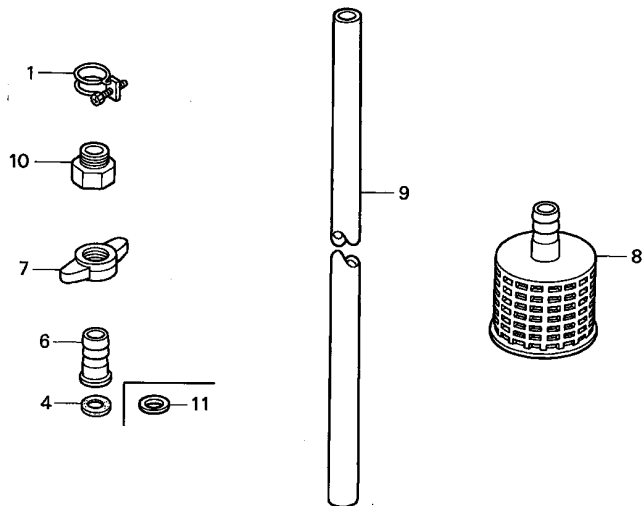
3

Ref. No.	Part No.	Description	Reqd. QTY wx 10	Serial No.	Parts catalogue code
1	78101-YE9-003	CASING	1	-----	A1,A2,A4
	78101-YE9-013	1	-----	A4/A
2	78102-YE9-003	PLATE, END	1	-----	
3	78103-YE9-003	PLATE, SUCTION	1	1021045	A1,A2
	78103-YE9-611	1	-----	A4,A4/A
			1	1021046	A1,A2
4	78104-YE9-003	PIPE, OUTLET	1	1021045	A1,A2
	78104-YE9-611	1	-----	A4,A4/A
			1	1021046	A1,A2
5	78106-YE9-003	IMPELLER	1		
6	78107-YE9-003	CASE, VOLUTE	1		
7	78110-YE9-003	PACKING, SUCTION	1		
8	78112-YE9-003	PACKING, END PLATE	1		
9	78114-YE9-003	O-RING	1		
10	78115-YE9-003	RING A, SEAL	1		
11	78117-YB7-020	CAP, FILLER	2		
12	78118-YB0-003	RING, SEAL (B)	2		
13	78122-YE9-000	SHIM, ADJUSTER	N		
14	78125-YE9-003	CASE, SPACER	1		
15	78130-YE9-003	SEAL ASSY., MECHANICAL	1		
16	78206-YE9-003	HANDLE	1		
17	22542-900-000	GRIP, LEVER	1		
18	78316-YE9-000	BRACKET COMP., PUMP	1		
19	90441-028-010	WASHER, SEALING, 6MM	4		
20	95701-06014-00	BOLT, FLANGE, 6X14	9		



Ref. No.	Part No.	Description	Reqd. QTY		Serial No.	Parts catalogue code
			wx	10		
21	95701-06018-00	BOLT, FLANGE, 6X18	2		
22	95701-06020-00	BOLT, FLANGE, 6X20	4		
23	95701-06025-00	BOLT, FLANGE, 6X25	1		
24	95701-06055-00	BOLT, FLANGE, 6X55	6		
25	96001-06018-00	BOLT, FLANGE, 6X18	4		





YE94-F0200

Service item	F.R.T.

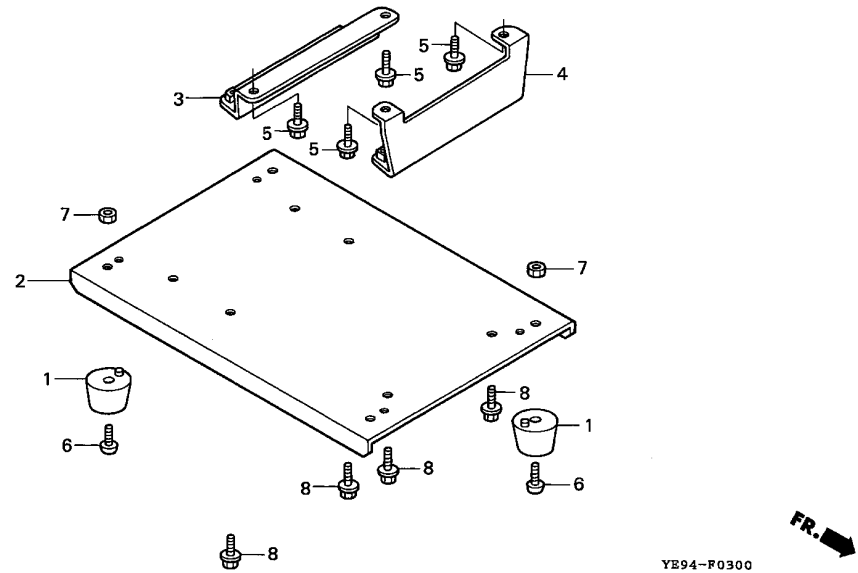
3

Ref. No.	Part No.	Description	Reqd. QTY	Serial No.	Parts catalogue code
			wx 10		
1	78139-YB0-710	BAND, HOSE	3		
4	78178-YE9-800	PACKING, COUPLER (MALE)	2	----- 1021045	A1,A2
6	78311-YB0-710	COUPLING, HOSE	2	----- 1021045	A1,A2
	78311-YE9-610	2	-----	A4,A4/A
			2	1021046	A1,A2
7	78312-YE9-000	RING, HOSE CLAMP	2	----- 1021045	A1,A2
	78312-YE9-610	2	-----	A4,A4/A
			2	1021046	A1,A2
8	78325-YB0-711	STRAINER COMP.	1		
9	78330-YB0-710	HOSE, SUCTION (5M)	1	-----	A2,A4,A4/A
10	78173-YE9-611	ADAPTER	1		
11	78313-YE9-610	PACKING, COUPLING	2	-----	A4,A4/A
			2	1021046	A1,A2

F-3

FRAME

E 4

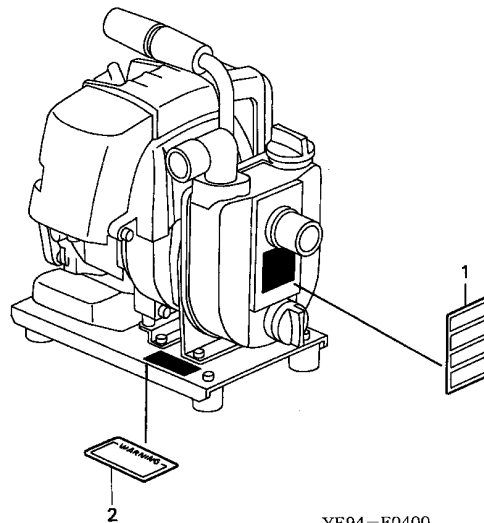
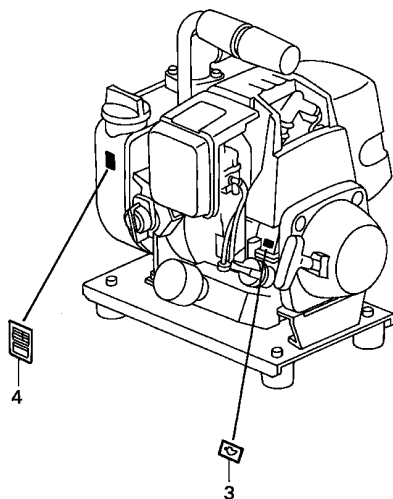


Service item

F.R.T.

Ref. No.	Part No.	Description	Reqd. QTY	Serial No.	Parts catalogue code
			WX 10		
1	60407-812-000	RUBBER, BOTTOM	4		
2	78203-YE9-000	BED, FRAME	1	----- A1,A2	
	78203-YE9-003	1	----- A4,A4/A	
3	78315-YE9-000	BRACKET A, ENGINE	1		
4	78319-YE9-000	BRACKET COMP. B, ENGINE	1		
5	90003-892-000	BOLT, FLANGE, 5X12	4		
6	93500-06010-0A	SCREW, PAN, 6X10	4		
7	94001-06000-0S	NUT, HEX., 6MM	4		
8	95701-06014-00	BOLT, FLANGE, 6X14	4		

3



YE94-F0400

Service item

F.R.T.

3

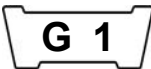
Ref. No.	Part No.	Description	Reqd. QTY	Serial No.	Parts catalogue code
			wx 10		
1	78141-YB0-710	MARK, CAUTION (PUMP)	1	----- 1021045	A1,A2
2	78142-YB3-000	LABEL, PUMP WARNING	1	----- 1021045	A1,A2
	78142-YF3-610	LABEL, PUMP WARNING (ENGLISH)	1	----- 1021046	A4,A4/A
			1	-----	A1,A2
3	87531-YE9-000	MARK, OIL CAUTION	1		
4	78141-YE9-610	LABEL, CAUTION (PUMP)	1	----- 1021045	A1,A2
	78141-YF3-620	1	----- 1021046	A4,A4/A
			1	-----	A1,A2

PART NO. INDEX

F 2

Part Number	Address	Page	Ref.	Part Number	Address	Page	Ref.	Part Number	Address	Page	Ref.	Part Number	Address	Page	Ref.
95701-06020-00	E2	29	22												
95701-06025-00	E2	29	23												
95701-06055-00	E2	29	24												
96000															
96001-06018-00	E2	29	25												
98000															
98056-55757	C2	12	21												
98056-55777	C2	12	21												
99000															
99005-01000	D1	27	3												
99008-01600	D1	27	4												
99101-ZM3-0330	C8	18	34												
99101-ZM3-0350	C9	19	34												
99101-ZM3-0400	C8	18	34												
99101-ZM3-0410	C8	18	34												
99101-ZM3-0420	C8	18	34												
99102-ZM3-0340	C9	19	34												
99102-ZM3-0350	C9	19	34												

PART NAME INDEX



Part name	Address	Page	Ref.	Part name	Address	Page	Ref.	Part name	Address	Page	Ref.
[A]				COLLAR C5 15 14				[J]			
ADAPTER E3 30 10				COLLAR A, HEAD COVER C1 11 17				JET C8 18 34			
ARM, SWING C5 15 8				COLLAR, AIR CLEANER C10 20 5				JET C9 19 34			
ARM, VALVE ROCKER C4 14 4				COLLAR, HEAD COVER C1 11 16				[K]			
ARRESTER, SPARK C11 21 2				COLLAR, TOP COVER C15 25 3				KEY, WOODRUFF, 16X12 C13 23 7			
[B]				CONTROL ASSY. C14 24 1				KNOB, RECOIL STARTER C5 15 9			
BAG, TOOL, 160MM D1 27 4				CORD, STOP SWITCH C13 23 4				[L]			
BAND, HOSE E3 30 1				COUPLING, HOSE E3 30 6				LABEL, CAUTION E5 32 4			
BAR A, HANDLE D1 27 3				COVER COMP., HEAD C1 11 2				LABEL, PUMP WARNING E5 32 2			
BASE COMP., CONTROL C14 24 6				COVER COMP., TOP C15 25 1				LEVER, CONTROL C14 24 2			
BED, FRAME E4 31 2				COVER, AIR CLEANER C10 20 4				LEVER, METERING C7 17 13			
BODY ASSY., AIR PURGE C7 17 7				COVER, CAMSHAFT C1 11 4				LIFTER, VALVE C4 14 8			
BODY ASSY., PUMP C7 17 6				COVER, FAN C6 16 1				[M]			
BOLT-WASHER, 4X16 C1 11 18				COVER, OIL OUTLET VALVE C1 11 5				MARK, CAUTION E5 32 1			
BOLT-WASHER, 5X16 C13 23 6				COVER, PRIMER PUMP C7 17 16				MARK, OIL CAUTION E5 32 3			
BOLT, FLANGE, 5X12 E4 31 5				CRANKCASE SET C1 11 1				MARK, THROTTLE INDICATION C16 26 2			
BOLT, FLANGE, 5X14 C1 11 11				CRANKSHAFT COMP. C3 13 4				MARK, TYPE C16 26 3			
BOLT, FLANGE, 5X16 C14 24 10				[D]				MUFFLER COMP. C11 21 1			
BOLT, FLANGE, 5X18 C1 11 13				DIAPHRAGM ASSY., METERING C7 17 4				[N]			
BOLT, FLANGE, 5X22 C5 15 11				DIAPHRAGM, PUMP C7 17 5				NUT, FLANGE, 5MM C10 20 6			
BOLT, FLANGE, 5X22 C6 16 2				[E]				NUT, HEX., 6MM E4 31 7			
BOLT, FLANGE, 5X22 C1 11 10				ELEMENT, AIR CLEANER C10 20 2				NUT, SELF-LOCK, 6MM C14 24 12			
BOLT, FLANGE, 5X22 C6 16 3				EMBLEM C16 26 1				NUT, TAPPET ADJUSTING C4 14 12			
BOLT, FLANGE, 5X22 C8 18 30				[F]				[O]			
BOLT, FLANGE, 5X32 C9 19 40				FAN, RATCHET C5 15 6				OIL SEAL, 12X25X6 C3 13 5			
BOLT, FLANGE, 5X35 C9 19 39				FILTER, FUEL C12 22 7				OIL SEAL, 15X25X6 C3 13 6			
BOLT, FLANGE, 5X50 C11 21 5				FILTER, FUEL INLET C9 19 36				O-RING C7 17 15			
BOLT, FLANGE, 5X55 C1 11 12				FLYWHEEL COMP. C13 23 3				O-RING, 14.8X2.4 C8 18 32			
BOLT, FLANGE, 6X14 E4 31 8				[G]				[P]			
BOLT, FLANGE, 6X18 E2 29 21				GASKET, METERING DIAPHRAGM C7 17 1				PACKING, CARBURETOR C8 18 27			
BOLT, FLANGE, 6X20 E2 29 22				GASKET, PUMP C7 17 2				PACKING, COUPLER E3 30 4			
BOLT, FLANGE, 6X25 E2 29 23				GRIP, LEVER E1 28 17				PACKING, COUPLING E3 30 11			
BOLT, FLANGE, 6X55 E2 29 24				GROMMET, FUEL TUBE C12 22 1				PACKING, END PLATE E1 28 8			
BOLT, HEX., 5X75 C8 18 29				GUIDE, AIR EX. C11 21 3				PACKING, HEAD COVER C1 11 3			
BRACKET A, ENGINE E4 31 3				GUIDE, AIR INLET C9 19 38				PACKING, INSULATOR C8 18 26			
BRACKET COMP. B, ENGINE E4 31 4				GUIDE, AIR INTAKE C8 18 28				PACKING, OIL FILLER CAP C1 11 9			
BRACKET COMP., PUMP E1 28 18				GUIDE, ROPE C5 15 4				PACKING, PROTECTOR C9 19 35			
[C]				[H]				[Q]			
CAMSHAFT ASSY. C4 14 1				HANDLE E1 28 16				PACKING, SUCTION E1 28 7			
CAP ASSY., FUEL TANK C12 22 6				HOSE, SUCTION E3 30 9				PIN, METERING LEVER C7 17 12			
CAP ASSY., OIL FILLER C2 12 22				[I]				PIN, PISTON C3 13 3			
CAP, FILLER E1 28 11				IMPELLER E1 28 5				PIPE, OUTLET E1 28 4			
CARBURETOR ASSY. C8 18 24				INNER COVER, TOP C11 21 4				PISTON C3 13 2			
CASE COMP., AIR CLEANER C10 20 3				INSULATOR, CARBURETOR C8 18 25				PIVOT, ROCKER ARM C4 14 5			
CASE, RECOIL STARTER C5 15 2								PLATE, END E1 28 2			
CASE, SPACER E1 28 14								PLATE, OIL TRAP C10 20 1			
CASE, VOLUTE E1 28 6											
CASING E1 28 1											
CLIP, TUBE C12 22 10											
CLIP, WIRE HARNESS C8 18 31											
COIL ASSY., IGNITION C13 23 1											
COLLAR C5 15 13											



PART NAME INDEX

Part name	Address	Page	Ref.	Part name	Address	Page	Ref.	Part name	Address	Page	Ref.
PLATE, STOPPER	C1	11	7	TOOL KIT	D1	27	1				
PLATE, SUCTION	E1	28	3	TUBE A, CORRUGATED	C13	23	2				
PLUG, SPARK	C2	12	21	TUBE, 7X68	C2	12	20				
PULLEY, RECOIL STARTER	C5	15	7	TUBE, FUEL	C12	22	8				
PUMP, PRIMER	C8	18	22	TUBE, FUEL RETURN	C12	22	9				
[R]											
REEL, RECOIL STARTER	C5	15	3	VALVE, EX.	C4	14	7				
RETAINER, VALVE SPRING	C4	14	10	VALVE, INLET NEEDLE	C7	17	9				
RING A, SEAL	E1	28	10	VALVE, IN.	C4	14	6				
RING SET, PISTON	C3	13	1	VALVE, OIL OUTLET	C1	11	6				
RING, HOSE CLAMP	E3	30	7	[W]							
RING, SEAL	E1	28	12	WASHER	C8	18	21				
RING, SPRING RETAINING	C7	17	14	WASHER, CONTROL LEVER	C14	24	4				
ROD, PUSH	C4	14	3	WASHER, PLAIN, 5MM	C9	19	41				
ROD, THROTTLE	C14	24	8	WASHER, SEALING, 6MM	E1	28	19				
ROLLER	C4	14	2	WASHER, SEALING, 6.5MM	C1	11	15				
ROLLER, 4X28	C4	14	11	WRENCH, SPARK PLUG	D1	27	2				
ROPE, RECOIL STARTER	C5	15	10								
RUBBER A, TANK MOUNTING	C12	22	3								
RUBBER B, TANK MOUNTING	C12	22	4								
RUBBER, BOTTOM	E4	31	1								
[S]											
SCREEN, INLET	C7	17	8								
SCREW-WASHER, 5X10	C8	18	33								
	C11	21	8								
SCREW-WASHER, 5X16	C11	21	9								
SCREW-WASHER, 5X8	C11	21	7								
SCREW, METERING LEVER PIN	C7	17	11								
SCREW, PAN, 3X5	C1	11	19								
SCREW, PAN, 5X25	C14	24	13								
SCREW, PAN, 6X10	E4	31	6								
SCREW, PAN, 6X8	C1	11	14								
SCREW, PUMP COVER	C7	17	19								
SCREW, SETTING	C5	15	12								
SCREW, TAPPING, 4X6	C11	21	6								
SCREW, THROTTLE COLLAR	C7	17	18								
SEAL ASSY., MECHANICAL	E1	28	15								
SHAFT, P.T.O.	C13	23	5								
SHIM, ADJUSTER	E1	28	13								
SPACER, CONTROL LEVER	C14	24	5								
SPRING, CONTROL ADJUSTING	C14	24	7								
SPRING, LEVER	C14	24	3								
SPRING, METERING LEVER	C7	17	10								
SPRING, PUMP	C7	17	20								
SPRING, RECOIL STARTER	C5	15	5								
SPRING, VALVE	C4	14	9								
STARTER ASSY., RECOIL	C5	15	1								
STAY, FUEL TANK	C12	22	5								
STRAINER COMP.	E3	30	8								
SWITCH ASSY., ENGINE STOP	C14	24	9								
SWIVEL	C7	17	17								
[T]											
TANK, FUEL	C12	22	2								

1

FOREWORD INDEX

2

ENGINE GROUP

3

FRAME GROUP

4

PART NUMBER INDEX

5

PART NAME INDEX

HONDA
The Power of Dreams

July 04, 2004



PARTS CATALOG NEWS

Honda Motor Co., Ltd. Service Division

PARTS CATALOG - CORRECTED

Printed in Japan

CODE NO.	14YE90E3
PARTS CATALOG NEWS	WX10
NEWS NO.	001

Block No.	Ref. No.	Note	Part No.	Description	Reqd. QTY	Serial No.	Parts catalog code
					WX 10		
F-1	1	L	78101-YE9-003	CASING	1	----- 1053161	A2, A4
		T	78101-YE9-013	1	1053162 -----	A2, A4

NOTE A:PART NO. CHANGE D:NEWLY PROVIDED E:PART NO. DELETION K:REQUIRED NO. CORRECTION L:APPLICATION SERIAL NO. CORRECTION
T:APPLICATION CORRECTION Z:REMARKS CHANGE

July 11, 2004



PARTS CATALOG NEWS

Honda Motor Co., Ltd. Service Division

PARTS CATALOG - CORRECTED

Printed in Japan

CODE NO.	14YE90E3
PARTS CATALOG NEWS	WX10
NEWS NO.	002

Block No.	Ref. No.	Note	Part No.	Description	Reqd. QTY	Serial No.		Parts catalog code
					WX 10			
E-17	2	L	17511-ZM5-013	TANK, FUEL	1	-----	2168923	A4/A
		D	17511-ZM5-023	1	2168924	-----	A4/A
	7	L	17672-ZM3-003	FILTER, FUEL	1	-----	2168923	A4/A
		D	17672-ZOH-003	1	2168924	-----	A4/A

NOTE A:PART NO. CHANGE D:NEWLY PROVIDED E:PART NO.DELETION K:REQUIRED NO. CORRECTION L:APPLICATION SERIAL NO. CORRECTION
T:APPLICATION CORRECTION Z:REMARKS CHANGE

August 08, 2004



PARTS CATALOG NEWS

Honda Motor Co., Ltd. Service Division

PARTS CATALOG - CORRECTED

Printed in Japan

CODE NO.	14YE90E3
PARTS CATALOG NEWS	WX10
NEWS NO.	003

Block No.	Ref. No.	Note	Part No.	Description	Reqd. QTY	Serial No.		Parts catalog code
					WX 10			
E-14	12	T	16022-ZM3-004	PIN, METERING LEVER	0	-----	-----	A4/A
		D	16022-ZM3-014	1	-----	-----	A4/A
	24	L	16100-ZM5-807	CARBURETOR ASSY. (WYL 127) ...	1	-----	2109556	A4/A
		D	16100-ZM5-808	1	2109557	-----	A4/A

NOTE A:PART NO. CHANGE D:NEWLY PROVIDED E:PART NO.DELETION K:REQUIRED NO. CORRECTION L:APPLICATION SERIAL NO. CORRECTION
T:APPLICATION CORRECTION Z:REMARKS CHANGE